

Snapping Shoals EMC Illuminator

A Monthly Newsletter for Snapping Shoals EMC Members

April 2024



From left, Hannah Mock, Ryan Bell, Shelby Moore and Ethan Barley will represent SSEM on the 2024 Washington Youth Tour.

D.C. Bound Area Students Will Experience History, Gain Leadership Skills

Snapping Shoals EMC is sending four local high school students on a trip to our nation's capital this summer. Ethan Barley of Conyers, Ryan Bell of Covington, Hannah Mock of McDonough and Shelby Moore of Covington will represent SSEM on the 2024 Washington Youth Tour. 355594

Ethan is the son of Thua and Andrea Barley and is a junior at Rockdale Magnet School. Ryan is the son of Robby and Christy Bell and is a sophomore at Eastside High School/ Newton College & Career Academy-STEM. Hannah Mock is the daughter of Shaun and Laura Mock and is a junior at Ola High School. Shelby is the daughter of Kevin and Lisa Moore and is a junior at Eastside High School.

The Washington Youth Tour is a once-in-a-lifetime chance to experience our nation's history and government up close while developing leadership skills and having fun with teens representing electric co-ops from across the country.

Washington Youth Tour highlights typically include visiting the U.S. Capitol, U.S. Supreme Court, Holocaust Museum, Smithsonian Institution and, whenever possible, the White House. Other stops usually on the schedule are the National Cathedral and Arlington Cemetery as well as the World War II, Korean War, and Vietnam War memorials, and the Lincoln, Jefferson, FDR and MLK Jr. memorials.

SSEM's Washington Youth Tour winners also receive \$500 scholarships when they begin college. 4350238



Celebrate Savings with Local Provider

In a time when every penny counts, making informed decisions about purchases is more important than ever. At Snapping Shoals EMC, we value the trust and confidence our members place in us. That's why we created a partner program in April 2020 with Walton Gas, a trusted natural gas provider. Over the last four years, SSEM members have seen real savings while experiencing neighborly service from a local natural gas provider. 4555738

SSEM members enjoy consistently low rates on natural gas and exceptional customer service from Walton Gas, but Walton Gas is also committed to our members and our community. Representatives from Walton Gas regularly attend our Annual Meetings to speak with our members and help them better understand natural gas service.

Switching to Walton Gas is a win-win: Snapping Shoals EMC is able to better serve our members, and most importantly, you receive a great rate on your natural gas service without worry of hidden fees or tricky offers. 4400147

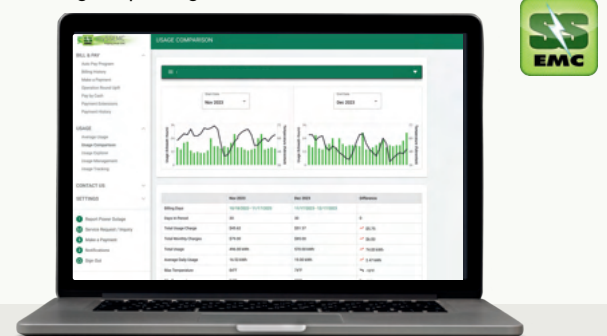
Visit walgongas.com/snappingshoals or call 678-639-3277 to join the Walton Gas family today!

mySSEM Makeover

New Design, Even Easier to Use!

Save time and money by managing your account anytime from anywhere with the mySSEM app or at ssemc.com. Starting April 1, mySSEM will have a new look that includes:

- Easy payment options to avoid late fees and service interruptions.
- Usage information to help you make the right decisions.
- Simple outage reporting.



Summer Rates Effective May 1



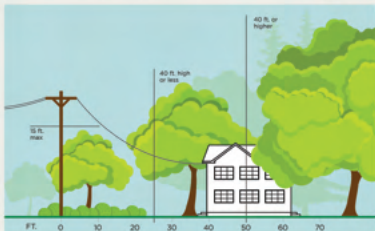
SSEMC's summer rates are effective from May through October, and winter rates are billed from November through April. In areas such as ours where summers are hot, the peak demand for electricity occurs during the months when air conditioners are working hard to keep everybody cool. The higher demand for electricity on these hot summer days makes the cost of providing power greater at this time of year, and that is reflected in our rate structure.

View our rates and calculate your bill at ssemc.com

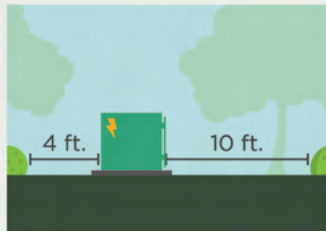
3 Ways to Help Limit Tree Trimming

Did you know electric utilities are required to trim trees and other types of vegetation that grow too close to overhead power lines? We know you love your trees, and we will do everything we can to avoid trimming them. Here's how you can help:

1. Plant trees in the right place. Trees that will be <40 ft. should be planted at least 25 ft. away from power lines (>40ft. should be at least 50 ft. away).



2. Don't block pad-mounted transformers. Plant shrubs at least 10 ft. away from transformer doors and 4 ft. from transformer sides.



3. Report dangerous branches. If you spot a tree or branch that is dangerously close to power lines, please let us know.



Trimming improves safety for all. Let's work together to enjoy the beauty of trees and reliable electricity.

Surge Protection Offers Peace of Mind

Power surges can happen at any moment. While typically caused by lightning strikes during storms, tripped circuit breakers and short circuits can also cause them too. Power surges can wreak havoc on the appliances and electronics inside your home, but there's a way to protect your household items so you won't have to replace them.

SSEMC offers our residential members Avert surge protection for only \$8.99 a month. Avert provides a combination of meter-base and point-of-use protection to guard appliances and electronics from the damaging effects of power surges.

When you sign up for Avert, SSEMC will install a meter socket adapter (MSA) at your meter base to protect motor-driven appliances such as your refrigerator, air conditioner, washer and dryer. There is a one-time \$19.99 installation fee for the MSA. We also provide five plug-in surge protectors to use inside your home to give sensitive electronics such as TVs,



SNAPPING SHOALS EMC SURGE PROTECTION

computers and audio systems the additional protection they need. Two of these plug-in devices will protect up to eight items each, and the other three are single-plug units. Some also provide telephone and/or coaxial (cable/satellite) protection as well.

The manufacturer guarantees protection of all qualifying appliances and electronics covered under the Avert surge protection agreement. A warranty of up to \$50,000 per surge occurrence is included. Some exclusions apply. Visit ssemc.com or call our Member Services Department at 770-385-2875 for more information. 4382945



P.O. Box 509
Covington, GA 30015
ssemc.com

24-Hour Phone Number
770-786-3484

Report an outage:
Use the mySSEMC app
or call 678-814-4961

Pay your bill or check your account balance:
Call 1-855-916-2970 or
use the mySSEMC app

Report power theft:
Call our anonymous tip line
at 678-729-8095

Call before you dig:
Call Utilities Protection Center
of Georgia at 811 or visit
www.georgia811.com

OFFICE LOCATIONS
14750 Brown Bridge Road
Covington, GA 30016

190 Fairview Road
Ellenwood, GA 30294

*24-hour payment kiosks
are located at each of our offices*

OFFICE HOURS
8 a.m. to 5 p.m.
Monday - Friday

**BOARD OF DIRECTORS
Chair**
Jake Carter
Henry County, District 4

Vice Chair
Jeanette Berry
Newton County, District 1

Secretary/Treasurer
Lance Harper
Newton County, District 1

Asst. Secretary/Treasurer
Alfred Flanigan
Rockdale County, District 2

Ruby Woods
Newton County, District 1

Anthony Norton
Rockdale County, District 2

Jeff Wigington
Rockdale County, District 2

Walter Johnson
DeKalb County, District 3

Ernest Watkins
DeKalb County, District 3

Gene Morris
Henry County, District 4

James I. White
Henry County, District 4

**Find your number
and win a \$50 credit!**

If your Snapping Shoals EMC account number is hidden in this issue of The Illuminator, call us at 770-786-3484 within the next month and you could win a \$50 credit on your bill.

The Illuminator is a monthly newsletter published for Snapping Shoals EMC members.

Report an outage, pay your bill and manage your account with the mySSEMC app.



Find us on Facebook at
[facebook.com/SnappingShoalsEMC](https://www.facebook.com/SnappingShoalsEMC)

