

Snapping Shoals EMC illuminator

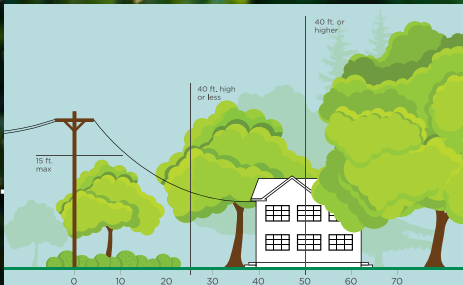
A Monthly Newsletter for Our Members

April 2026

3 Ways to Help Limit Tree Trimming

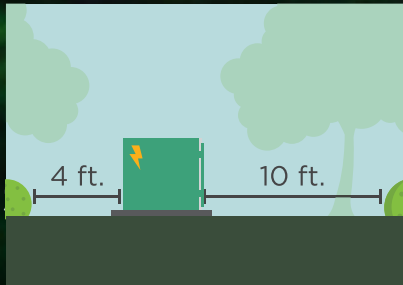
Did you know electric utilities are required to trim trees and other types of vegetation that grow too close to overhead power lines? We know you love your trees, and we will do everything we can to avoid trimming them.

HERE'S HOW YOU CAN HELP:



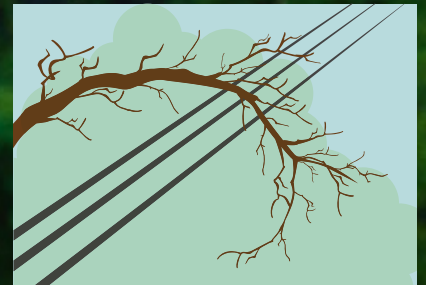
1. PLANT TREES IN THE RIGHT PLACE

Trees that will be less than 40 feet should be planted at least 25 feet away from power lines (greater than 40 feet should be at least 50 feet away).



2. DON'T BLOCK PAD-MOUNTED TRANSFORMERS

Plant shrubs at least 10 feet away from transformer doors and 4 feet from transformer sides.



3. REPORT DANGEROUS BRANCHES

If you spot a tree or branch that is dangerously close to power lines, please let us know. 4664973

**TRIMMING IMPROVES
SAFETY FOR ALL**

*Let's work together to enjoy the beauty
of trees and reliable electricity.*



Summer Rates Effective *May 1*

SSEMC's summer rates are effective from May through October, and winter rates are billed from November through April. In areas such as ours where summers are hot, the peak demand for electricity occurs during the months when air conditioners are working hard to keep everybody cool. The higher demand for electricity on these hot summer days makes the cost of providing power greater at this time of year, and that is reflected in our rate structure. 4680662

VIEW OUR RATES AND CALCULATE YOUR BILL AT [SSEMC.COM](https://www.ssemc.com)

Bill Payment Options

CHOOSE YOUR WAY TO PAY



SSEMC offers our members several payment options to make paying your bill fast, easy and hassle-free. Below are several ways to pay that we hope will enhance your experience as a member of Snapping Shoals EMC:



Payment Kiosks: Pay by cash, check or credit/debit card at our easy-to-use PaySite kiosks. The payment kiosks are accessible 24 hours a day, 7 days a week and are located at our Covington office and our Ellenwood office. The Ellenwood kiosk is available at the drive-thru.

The kiosks are also available throughout our territory. To find the kiosk nearest you, please visit www.paysitekiosklocator.com. 4571629



Online: Visit www.ssemc.com or use the mySSEMC app to pay your bill online with a check or credit/debit card.



Auto Pay: Automatically pay your electric bill each month with a credit or debit card or with your bank account. Register through mySSEMC or call us at 770-786-3484 to sign up. 2523132



By Phone: Pay your bill by phone using a credit/debit card or check by calling 1-855-916-2970.



Authorized Payment Locations: SSEMC has authorized payment locations through MoneyGram, Western Union and Vanilla Direct. Visit www.ssemc.com/payment-options and click on the "Pay In Person" tab for more information and to find locations for each service.



By Mail: Mail your payment, in the form of a check or money order, using the return envelope provided with your bill. If you have lost your envelope, mail your payment to Snapping Shoals EMC, P.O. Box 73, Covington, GA 30015.



Drop Box: Drop off your check or money order payment in our drop box at the Rockdale County Sheriff Office's Southside Precinct, located at 3552 Highway 20 SE near Honey Creek. Payments are picked up at 4:30 p.m. Mondays through Fridays and processed the next business day.



In Person: Pay with cash, check, money order or credit/debit card at one of our office locations 8 a.m. to 5 p.m. Mondays through Fridays. Night depositories are located at both offices. 4592031



P.O. Box 509
Covington, GA 30015
ssemc.com

24-Hour Phone Number
770-786-3484

Report an Outage:
Use the mySSEMC app
or call 678-814-4961

Pay your bill or check your account balance:
Call 1-855-916-2970 or
use the mySSEMC app

Report power theft:
Call our anonymous tip line
at 678-729-8095

Call before you dig:
Call Utilities Protection Center
of Georgia at 811 or visit
www.georgia811.com

Office Locations:
14750 Brown Bridge Road
Covington, GA 30016

190 Fairview Road
Ellenwood, GA 30294

24-hour payment kiosks are
located at each of our offices

Office Hours:
8 a.m. to 5 p.m.
Monday-Friday

Board of Directors

Chair
Jake Carter
Henry County, District 4

Vice Chair
Jeanette Berry
Newton County, District 1

Secretary/Treasurer
Lance Harper
Newton County, District 1

Asst. Secretary/Treasurer
Alfred Flanigan
Rockdale County, District 2

Ruby Woods
Newton County, District 1

Anthony Norton
Rockdale County, District 2

Jeff Wigington
Rockdale County, District 2

Walter Johnson
DeKalb County, District 3

Ernest Watkins
DeKalb County, District 3


Gene Morris
Henry County, District 4

James I. White
Henry County, District 4

**Find your number and
win a \$50 credit!**

If your Snapping Shoals EMC account number is hidden in this issue of The Illuminator, call us at 770-786-3484 within the next month and you could win a \$50 credit on your bill.

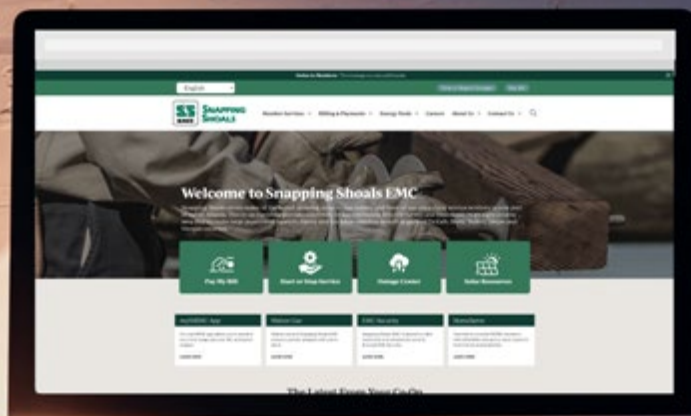
The Illuminator is a monthly newsletter published for Snapping Shoals EMC members.

 Report an outage, pay your monthly bill and manage your account with the mySSEMC app

Website Update

We're excited to share that our website is getting a refresh!

Be on the lookout for our updated site at ssemc.com



Your Touchstone Energy[®]
Cooperative
The power of human connections[®]