

Snapping Shoals EMC Illuminator



A Monthly Newsletter for Snapping Shoals EMC Members

March 2018



SNAPPING SHOALS EMC
COOPERATIVE
SOLAR

Be a Part of the Solar Movement

Solar project is perfect solution for members

Snapping Shoals EMC's first cooperative solar project is now producing electricity! 4538110

Don't miss out on this opportunity to sign up now.

To purchase your own block of solar electricity for \$20 each per month, call 770-786-3484 today! Limit 2 blocks per member.



Report Security Light Issues at SSEMC.com

If you experience any problems with your security lights, or notice lights out, please report them on our website at www.ssemc.com under the Security Lighting section. Please have

the following information available when reporting the issue: account number, the nearest address of the pole, the pole number (if available) and the type of pole. 1541887

Apply for Education Assistance

Applications are currently available for education assistance from Snapping Shoals EMC's Operation Round Up. Applicants must live in a household receiving electric service from Snapping Shoals, and total household income may not exceed \$50,000. This assistance may be used to attend an accredited college, university or trade school in Georgia only.

Applicants must be enrolled or accepted at the school they are seeking funds to attend. We will be accepting completed applications March 1-May 15. 1606847

Visit www.ssemc.com to download an application, or call our Operation Round Up line at 770-385-2737 to have one mailed to you.



Keep your home and family safe.

A home security system with a camera from EMC Security will help keep would-be thieves away.

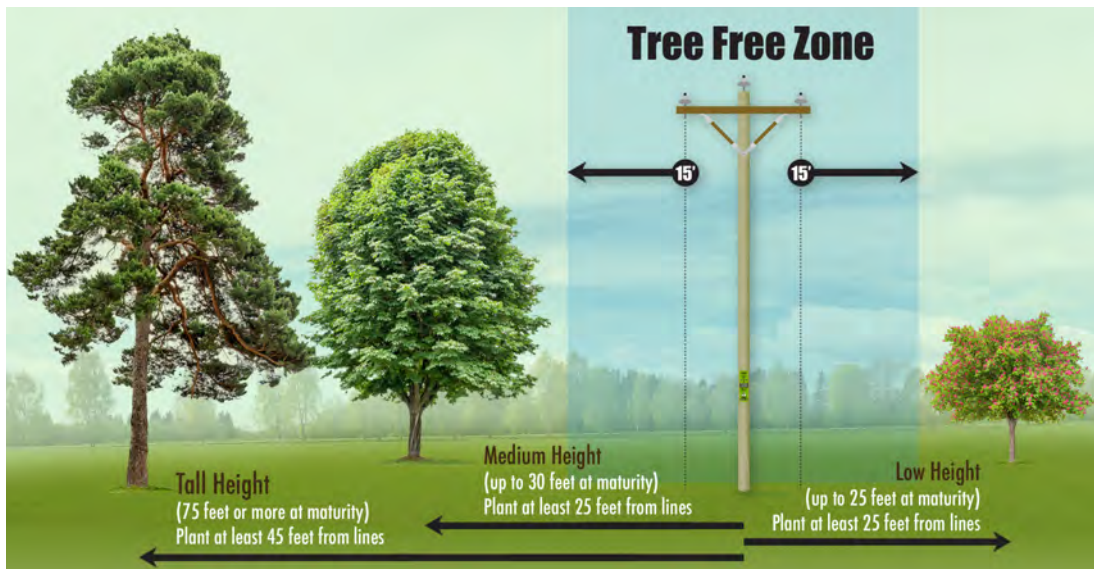
- Customized home security systems, security cameras for inside and out, and professional alarm monitoring
- Your alarm goes off? We'll help - fast. Our average response is less than 14 seconds!

Contact us now to see how you can get a free security camera*

➤ 770-963-0305 | emcsecurity.com

*Free camera requires a 24-month commitment and video subscription service. EMC Security terms and conditions apply. Residential only.





Call SSEMCM Before You Plant

Maintaining right-of-way keeps service reliable, safe

There are many ways that Snapping Shoals EMC provides you with safe, reliable electric service. One of the most common and crucial ways is referred to as right-of-way clearing (or vegetation management).

A right-of-way (ROW) refers to a strip of land underneath or around power lines that your electric cooperative has the legal responsibility to maintain and clear. Trees must grow at a distance far enough from conductors where they will not cause harm to individuals or disruption to electrical service. Specifications can vary, but at SSEMCM we maintain a minimum of 15 feet on either side with a maximum of 25 feet ground to sky. We also seek to maintain zero woody growth beneath the lines.

Clearing the ROW is critical to keeping our members' lights on. An average of 15 percent of power interruptions occur when trees, shrubs or bushes contact power lines. 1831536

If a tree encroaches on this safe distance, our vegetation management team will trim back branches and brush using chain saws, bucket trucks, tree climbers, brush chippers and mowers. Herbicides can also be used as a way to support the growth of low growing plant species that will outcompete the tall trees growing beneath power lines.

ROW clearing is also critical to ensuring that we provide members with affordable electricity. Vegetation and structures of any type in the ROW can prolong outage restoration times and impede routine work on the lines. Staying ahead of the game keeps us from having to come out after a storm to restore power due to fallen trees. 4370922

For your safety and for more reliable service, always contact us first at 770-786-3484 before planting, trimming or removing any trees near power lines. Under the High Voltage Safety Act, if you are performing any activity within the vicinity of an overhead high-voltage line, you are required to give notice to the Utilities Protection Center at least 72 hours in advance. The center may be reached at 1-800-282-7411.

Our best opportunity to maintain safe and functional lines is with the cooperation of our members.

At left, these tags on our poles serve as a reminder not to plant within our right-of-way. Always call us at 770-786-3484 before you plant near or around our lines.



Power Line Right-of-Way

Tree Free Zone
DO NOT PLANT woody vegetation underneath and 15' from outer-most power line on EACH side

Call Before You Plant

770-786-3484 • www.ssemc.com

DANGER
Electrical Hazard

Call 811 Before You Work



P.O. Box 509
Covington, GA 30015
www.ssemc.com

24-Hour Phone Number
770-786-3484

Report an outage:
Use the mySSEMCM app
or call 678-814-4961

Pay your bill or check your account balance:
Call 1-888-999-1416 or
use the mySSEMCM app

Report power theft:
Call our anonymous tip line
at 678-729-8095

Call before you dig:
Call Utilities Protection Center
of Georgia at 811 or visit
www.georgia811.com

OFFICE LOCATIONS
14750 Brown Bridge Road
Covington, GA 30016

190 Fairview Road
Ellenwood, GA 30294

24-hour payment kiosks
are located at each of our offices

OFFICE HOURS
8 a.m. to 5 p.m.
Monday - Friday

BOARD OF DIRECTORS
Chairman
Anthony Norton
Rockdale County, District 2

Vice Chairman
Walter Johnson
DeKalb County, District 3

Secretary/Treasurer
Ruby Woods
Newton County, District 1

Asst. Secretary/Treasurer
Gene Morris
Henry County, District 4

D.L. "Pete" Knox
Newton County, District 1

Jeanette Berry
Newton County, District 1

Dr. Joseph Sharp
Rockdale County, District 2

Dr. Millard Ross
Rockdale County, District 2

Frank Lineberger
DeKalb County, District 3

Jake Carter
Henry County, District 4

James I. White
Henry County, District 4

**Find your number
and win a \$50 credit!**

If your Snapping Shoals EMC account number is hidden in this issue of The Illuminator, call us at 770-786-3484 within the next month and you could win a \$50 credit on your bill.

The Illuminator is a monthly newsletter published for Snapping Shoals EMC customers.

Editor
Leigh-Anne Burgess

Report an outage, pay your bill and manage your account with the mySSEMCM app.



Find us on Facebook at
www.facebook.com/SnappingShoalsEMC